



TEM7 Polyclonal Antibody

Catalog No	YP-Ab-13693
Isotype	IgG
Reactivity	Human;Rat;Mouse;
Applications	IHC;IF;ELISA
Gene Name	PLXDC1
Protein Name	Plexin domain-containing protein 1
Immunogen	The antiserum was produced against synthesized peptide derived from human PLXDC1. AA range:71-120
Specificity	TEM7 Polyclonal Antibody detects endogenous levels of TEM7 protein.
Formulation	Liquid in PBS containing 50% glycerol, 0.5% BSA and 0.02% sodium azide.
Source	Polyclonal, Rabbit,IgG
Purification	The antibody was affinity-purified from rabbit antiserum by affinity-chromatography using epitope-specific immunogen.
Dilution	IHC: 1/100 - 1/300. ELISA: 1/20000.. IF 1:50-200
Concentration	1 mg/ml
Purity	≥90%
Storage Stability	-20°C/1 year
Synonyms	PLXDC1; TEM3; TEM7; Plexin domain-containing protein 1; Tumor endothelial marker 3; Tumor endothelial marker 7
Observed Band	
Cell Pathway	[Isoform 1]: Cell membrane; Single-pass type I membrane protein. Cell junction, tight junction. Localized predominantly at the tight junctions of vascular endothelial cells and to a lesser extent at the luminal surface of vascular endothelial cells.; [Isoform 2]: Secreted .; [Isoform 3]: Secreted .; [Isoform 4]: Cytoplasm .
Tissue Specificity	Detected in endothelial cells from colorectal cancer, and in endothelial cells from primary cancers of the lung, liver, pancreas, breast and brain. Not detectable in endothelial cells from normal tissue. Expressed in fibrovascular membrane with increased expression in individuals with proliferative diabetic retinopathy.
Function	PTM:N-glycosylated.,similarity:Belongs to the plexin family.,subunit:May interact with cortactin.,tissue specificity:Detected in endothelial cells from colorectal cancer, and in endothelial cells from primary cancers of the lung, liver, pancreas, breast and brain. Not detectable in endothelial cells from normal tissue.,
Background	PTM:N-glycosylated.,similarity:Belongs to the plexin family.,subunit:May interact with cortactin.,tissue specificity:Detected in endothelial cells from colorectal cancer, and in endothelial cells from primary cancers of the lung, liver, pancreas, breast and brain. Not detectable in endothelial cells from normal tissue.,

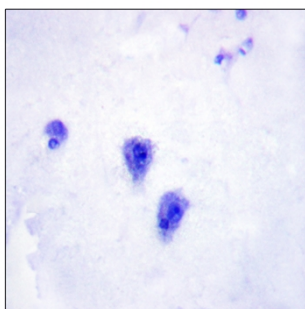
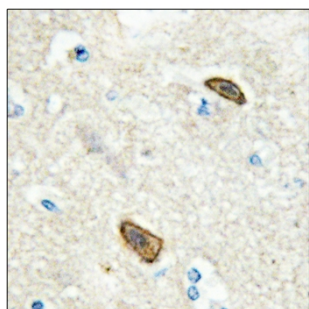
matters needing attention

Avoid repeated freezing and thawing!

Usage suggestions

This product can be used in immunological reaction related experiments. For more information, please consult technical personnel.

Products Images



Immunohistochemistry analysis of paraffin-embedded human brain, using PLXDC1 Antibody. The picture on the right is blocked with the synthesized peptide.